



Hester Canterbury

9 Chatham Road,
Canterbury, Vic 3126



The earlier you get in the BETTER!

It is not like being in retirement, it's just living at a very high standard.

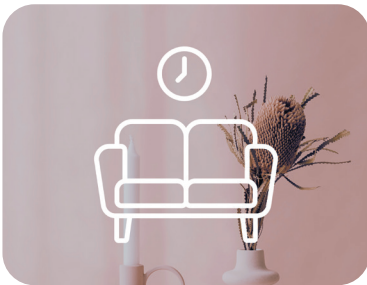
*Hester Canterbury Resident,
Phil*



Contact Us Today
Phone: 1300 667 444
Email: sales@basscare.org.au
www.hestercanterbury.com.au

H

**'Residents create the community,
we just provide the space'**



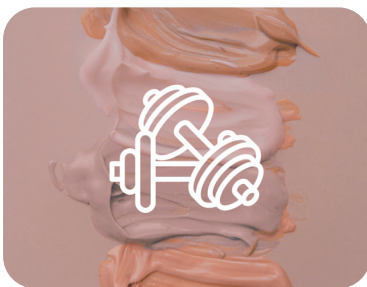
*34
Elegant
Apartments*



*Set over three
residential
floors with 3
separate wings*



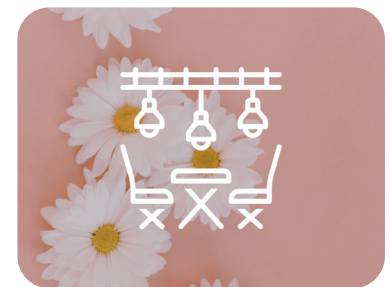
*One, two
and three
bedrooms*



*Welcoming
spaces
extending your
home*



*Secure
Entrance and
Car park*



*Manicured
Gardens and
Courtyard*

H

‘Where memories continue to evolve’

Our Story

Hester Canterbury is so much more than just a boutique independent retirement living community for those rightsizing their lives, it's potentially the last place for new memories to call home.

Inspiration for just 34 contemporary living apartments has been thoughtfully drawn from award winning retirement living architects and interior designers.

Named after trailblazing modernist Australian artist Joy Hester, Hester Canterbury incorporates her ethos of creating a space unique to others. At the heart of Hester Canterbury's lively community is an appreciation for quality design, social engagement and a connection to a beautiful environment of nature, care and support.

In 1956, Fred and Colleen Morgan realised some senior members of the local community were going without food. This inspired them to form the Boroondara Aged Services Society which consisted of preparing and delivering meals to those in need. BASScare as it is now known, has grown to become a community focused not for profit offering services that include home services, social support services and meals on wheels, while also incorporating assisted living at Morgan Glen Iris and residential aged care at Samarinda Lodge in Ashburton and at Faversham House, which is conveniently situated adjacent to Hester Canterbury.

**‘Supporting your retirement lifestyle
is our core value’**

H



H

'Life made easy'

Resting on Chatham Road in the heritage adorned leafy suburb of Canterbury just 10km from the CBD, our quiet light filled apartments draw you into generous floor spaces with high ceilings and all the creature comforts of a luxe lifestyle that celebrates and rewards a life of work.

From breathtaking fittings and finishes, beautiful Urban Oak floorboards to smooth Stone benchtops, to top of the range Miele appliances supplied throughout, these apartments will truly provide a warm high end home of your dreams. At your fingertips is zonal heating and cooling whilst the heated towel rail in your ensuite bathroom is just one of the many extras. In addition there is a dedicated office or study space, while your security and welfare is taken care of with state of the art security card access, video intercom linked to the main front entrance, plus the support of an emergency call function that is monitored 24/7.

Spread over three independent wings, your privacy is assured with only four unique apartments to each floor that are serviced by direct lift access from your secure underground car space, lockable storage unit and climate controlled wine room with individual lockers.

If you are looking to rightsize your home and upsize your lifestyle so you can start living maintenance free, with peace of mind during your active aging journey of care and support as required, then Hester Canterbury is truly the destination.

H



H

‘Beautifully designed communal spaces ensure spending quality time with family, friends or the community is extra special’

Hester Canterbury's finest luxury hotel inspired communal spaces include a Club Lounge & Bar, Private Dining Room, sun soaked Library, fully equipped Gym, premium class Cinema, beautifully landscaped outdoor entertaining area and much more. These spaces are just the beginning to an exceptional lifestyle and extension of your home to enjoy with the community or loved ones.

Your social calendar may include morning tea in the club lounge, catered formal lunches and dinners in the dining room, or enjoying a laugh at Friday happy hour. You may prefer a cinematic great on the big screen for movie night, celebrating a special event with a BBQ, or just finding a quiet moment to peruse the daily newspapers or a good book in the picturesque landscaped garden by the fish pond.

You can even reserve a communal space for a family celebration, special event, meeting or just a card night, with the option to cater yourself or have the BASScare professional chefs prepare a menu for you.

H



H

‘You’ll fall in love with the location’

Hester Canterbury is situated in a prime sought after location with generous choices to cater for your every need, mostly within walking distance. For those wishing to continue an active lifestyle there are ample offerings to stay socially connected, enjoy a hit of tennis or 18 holes at one of the nearby champion golf courses, or maybe you just prefer a walk through one of the beautiful local gardens and to pause for a coffee.

With easy access to trains and trams, your passion maybe the eclectic choice of galleries, exhibitions or the theatre, or the pure indulgence of ample fashionable cafes and restaurants to cater for every taste.

You may want to buy that little something special in Maling Road or Camberwell Junction, or for the more serious shopper take the short trip to Westfield Doncaster, Chadstone or the City.

We cherish that the independence that suits you best is the single most important thing to hold and enjoy. We endeavour to promote and support a rewarding style of living, ensuring you have a choice of social activities and engagement within the Hester Canterbury community and beyond, while proudly sharing the place you call home with family and friends.



Hester Canterbury

9 Chatham Road, Canterbury VIC 3126
Email: sales@basscare.org.au Phone: 1300 667 444
www.hestercanterbury.com.au