

11<sup>th</sup> September 2019

## Important Dates

### 12<sup>th</sup> September

Balenciaga at Bendigo  
9:00am - 5:00pm

### 18<sup>th</sup> September

September Residents'  
Birthday Cake

### Residents Committee Dates for 2019

8<sup>th</sup> October  
12<sup>th</sup> November  
10<sup>th</sup> December

### Upcoming Monthly Dinner Dates

25<sup>th</sup> September  
30<sup>th</sup> October  
27<sup>th</sup> November

### Pharmacy Guild of Australia Medications Talk

Wednesday 18<sup>th</sup> September  
at 10:45am - 12:00 noon at  
The Canterbury Centre

### Vardos (Gypsy & Fold Music)

Free live music performance  
Thursday 19<sup>th</sup> September at  
2:00pm at The Canterbury  
Centre

### Christmas Luncheon

Friday 13<sup>th</sup> December

Access free Wi-Fi on  
ground floor. Please see  
staff for the password.



## Housekeeping Notices

### New Staff Member

It is with great pleasure that we would like to introduce our new staff member Gerri. No doubt over the next few weeks you will all have the opportunity to meet and welcome Gerri to Hester Canterbury.

### St Oswald's Annual Food Collection

On behalf of the Anglican Mission House in Fitzroy and Joy Warfe we sincerely thank you for your generous contributions to the St Oswald's Annual Food Collection.

### Change to Wi-Fi Password

Due to residents preference the public Wi-Fi password has been changed to the original. Please contact Hester staff for the new password.

### Tree Trimming

The arborist will be at Hester Canterbury Thursday the 12<sup>th</sup> September at 10:00am to remove some overhanging tree branches near the North Wing.

### Coffee Machine Survey

Just a reminder to all Residents that the coffee machine survey responses are due by COB 13<sup>th</sup> of September 2019. Please place the document in the letter box located at reception or hand it to any of the Hester Canterbury staff.

**Week Three of the new Winter Menu starts on  
Monday 16<sup>th</sup> of September.  
Please place any orders by lunchtime .  
Bon Appetit!**

The Hester Canterbury Newsletter is uploaded  
on the Hester website under 'news'.  
[www.hestercanterbury.com.au](http://www.hestercanterbury.com.au)

**Tuesday 17<sup>th</sup> September 7:30pm**

## **Steel Magnolias (1989)**

**Director:** Herbert Ross

**Stars:** Shirley MacLaine, Olympia Dukakis, Sally Field



Centring around the lively Truvy Jones' Louisiana beauty parlour, the film shares the lives of a tightly-knit group of friends as they confront grief, loss, tragedies and heartaches by doing what they do best; gossiping and sharing. **(With captions)**

**Thursday 12<sup>th</sup> September 2pm**

## **Hidden Figures (2016)**

**Director:** Theodore Melfi

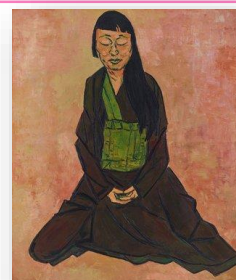
**Stars:** Taraji Henson, Octavia, Spencer & Janelle Monae



The remarkable true story of three brilliant African American women working at NASA, who served as the brains behind the launch into orbit of astronaut John Glen, a stunning achievement that turned around the Space Race. **(With captions)**

## **Up & Coming Event**

An excursion to view the 2019 Archibald Portraiture exhibition is being planned for mid October. The exhibition is being held at the TarraWarra Museum of Art just outside Healesville. There will be free time allocated for lunch in the Healesville town centre. More details to follow, in the meantime a sign up sheet for expressions of interest will be available at reception next week.



## **Did you know...**

### **GET DOWN TO BRASS TACKS**

Some believe that this phrase - which dates to the turn of the nineteenth century, relates to the brass tacks used in upholstery.

It may have been used in a Cockney rhyming game to mean "hard facts".

The most common understanding of this saying has to do with shopkeepers inserting tacks along the edge of their counters, providing a convenient means for measuring fabric.

When a customer finished looking over the available stock and had determined what to buy, the cloth was set on the counter and measured, ascertaining a price was "getting down to brass tacks".



**Hester**  
Canterbury

Please forward any contributions for future newsletters to Alexia for inclusion.

**Email:** [hester@basscare.org.au](mailto:hester@basscare.org.au)